

TRAC



Reduce the number of individuals who are at risk of becoming NEET by supporting young people aged 11-16 through a variety of interventions thus improving the life chances of vulnerable individuals.

WHO ARE THE TRAC PUPILS?

- Attendance between 70-80%
- Receives FSM (Free School Meals)
- Low attainment
- More than 1 exclusion within a year



SCHOOL



- Have been issued with a permanent exclusion
- On the EOTAS register; ALN
- Children's Teams GC&GCI
- Area of deprivation
- Unemployed families

WHAT'S BEHIND THE REFERRALS?

- Low educational attainment
- Socio-economic status
- Social prejudice
- Young People not seeing the benefit of being in education/training/work
- Low expectations
- Lack of support from families
- Negative behaviour
- Social/Mental Health problems



TRAC:
EDUCATION
EARLY IDENTIFICATION
CAREER SUPPORT
QUALIFICATION



UNDEB EWROPEAIDD
EUROPEAN UNION



Llywodraeth Cymru
Welsh Government

Cronfa Gymdeithasol Ewrop
European Social Fund

OUTCOMES

INDIVIDUAL:

- ✓ Personal and Social Skills
- ✓ Better attainment at school
- ✓ Motivation to succeed
- ✓ Increased ambition



SOCIETY:



- Fewer young people are unemployed
- Young people's aspirations have increased
- Reduction in anti-social behaviour
- Fewer resources being directed to a small number of individuals

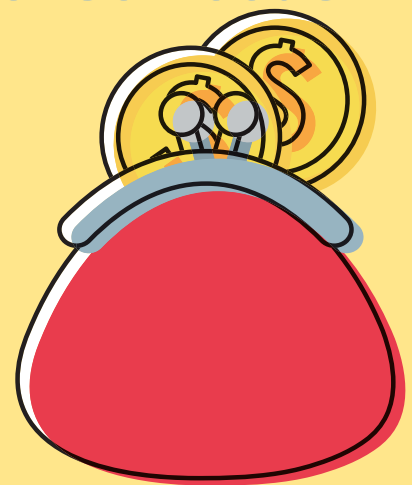
TO THE PUBLIC SECTOR COFFERS:



A reduction in the needs of the individual and their demand for services today and tomorrow.



In the long-term it will reduce the probability that the next generation will have the same intense needs.



TRAC

EDUCATION

QUALIFICATION

CAREER SUPPORT

EARLY IDENTIFICATION

OUTCOMES

934

individuals have received TRAC support

75

have completed and gained a Level 2 Qualification (equivalent to 1 A-C GCSE)

119

on current courses (equivalent of GCSE)

557

have left the project...



Moved on to a College course



Have had a positive outcome



Have moved on to work or Apprenticeship

**only 26 have been highlighted to receive additional TRAC support at College

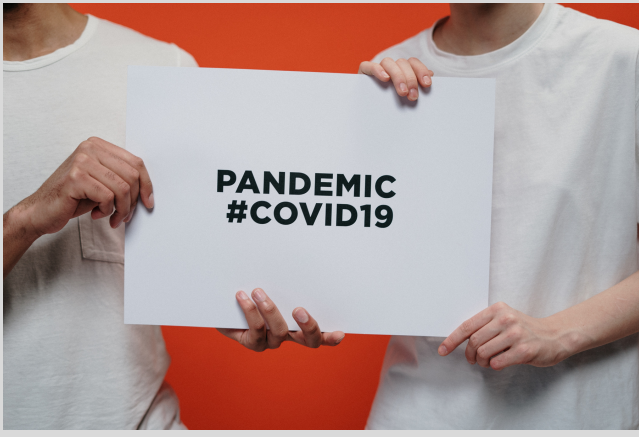
THE TRAC ESF FUNDING PERIOD COMES TO AN END AUGUST 2022

October 2021:
Last phase for receiving referrals

July 2022:
Finish supporting individuals

August 2022:
Project closes





What has changed for young people aged 11-16 (during COVID-19)?

- Schools have had **extended periods of off-site education since March 2020** (apart from Key Worker children and vulnerable pupils).
- Year 11 and 13 pupils **leaving education without sitting their exams** (GCSE, AS and A Level).
- Education being remotely through an online platform (**high number of families without devices or internet access**) has caused pupils to be idle in terms of their engagement.
- **Lack of contact with peers** leading to feelings of loneliness and isolation.
- Year 10 pupils have **accessing their optional subjects**.
- An **increase** in personal/mental health problems and not happy to receive support virtually - which will lead to more problems in the future.
- **Year 11 pupils without certainty of College/work**, unable to have the face-to-face contact to support them
- Year 6 pupils losing most of their final Primary year.
- **No opportunities** for work experience / employer visits.





Pupils who are mostly affected by COVID-19



Those already identified as at risk of being NEET



Those who are already open to harm



Those with mental health problems



Those on the County's EOTAS register



Year 11 pupils without certainty of College/work



Those with low attainment and motivation



What are the implications?



Failure to track prospective individuals who are at risk of becoming NEET

Maintain the accuracy of the Learner Profile system

High probability of unemployment and even more so within youth unemployment

Percentage of vulnerable pupils disengaging with their education

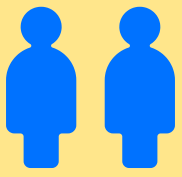
Long-term impact on young people's mental health



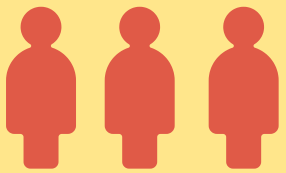
More demand on the type of provision within education to support the most vulnerable individuals.

ESF funding programme ends in 2023

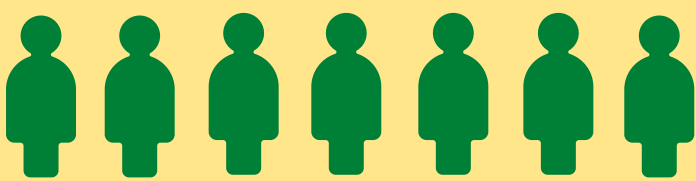
Inclusion Service - today



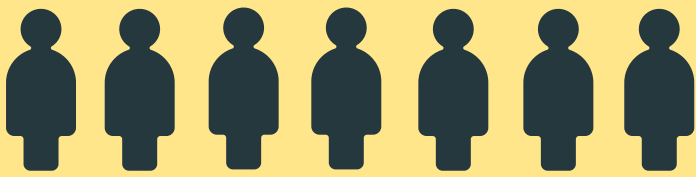
Llechan Lân Centres



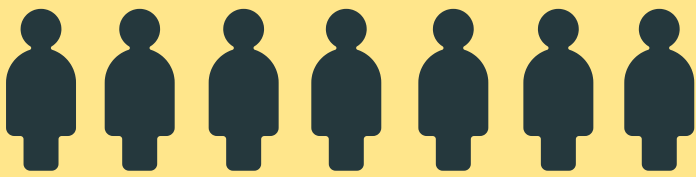
Early Intervention Service



Pecyn 25



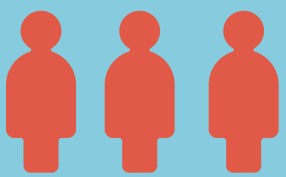
TRAC (ESF funding)



Inclusion Service - after ESF funding closes



Llechan Lân Centres



Early Intervention Service



Pecyn 25

After the ESF funding period ends - TRAC will not be able to support the most vulnerable pupils that will increase as a result of COVID-19.